

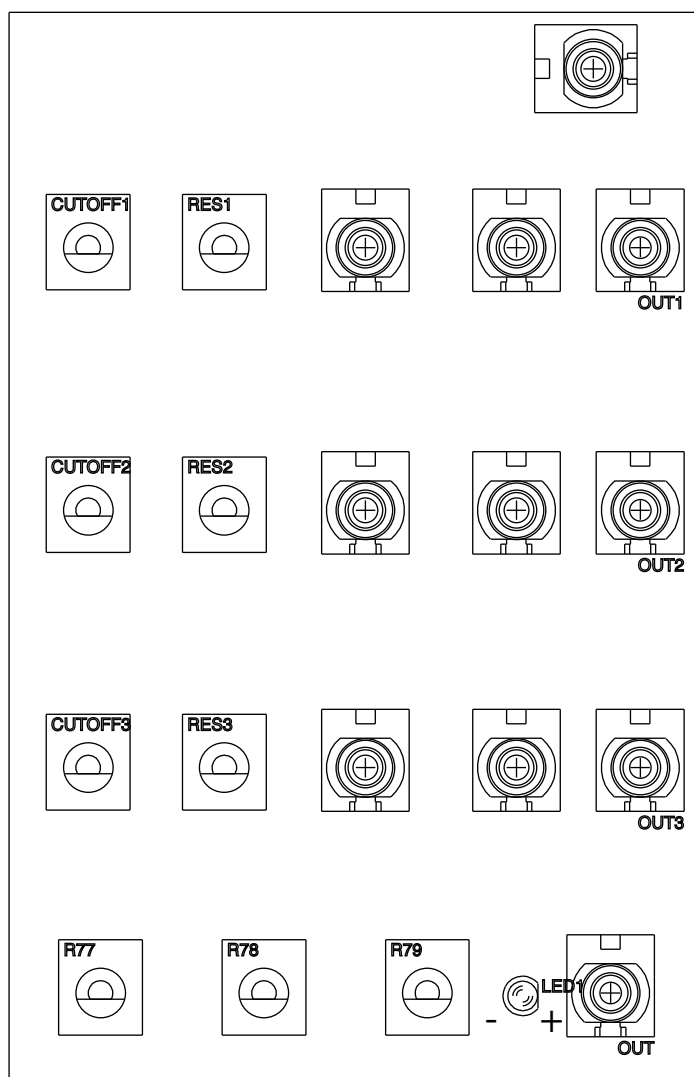
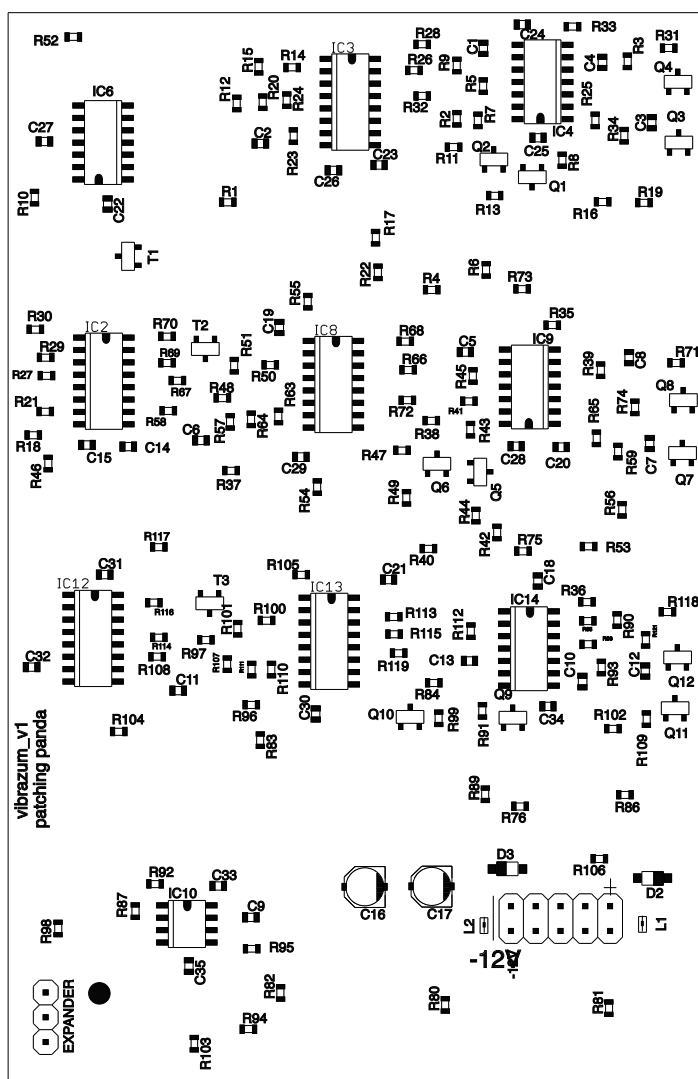
MEDIUM GRADE ●



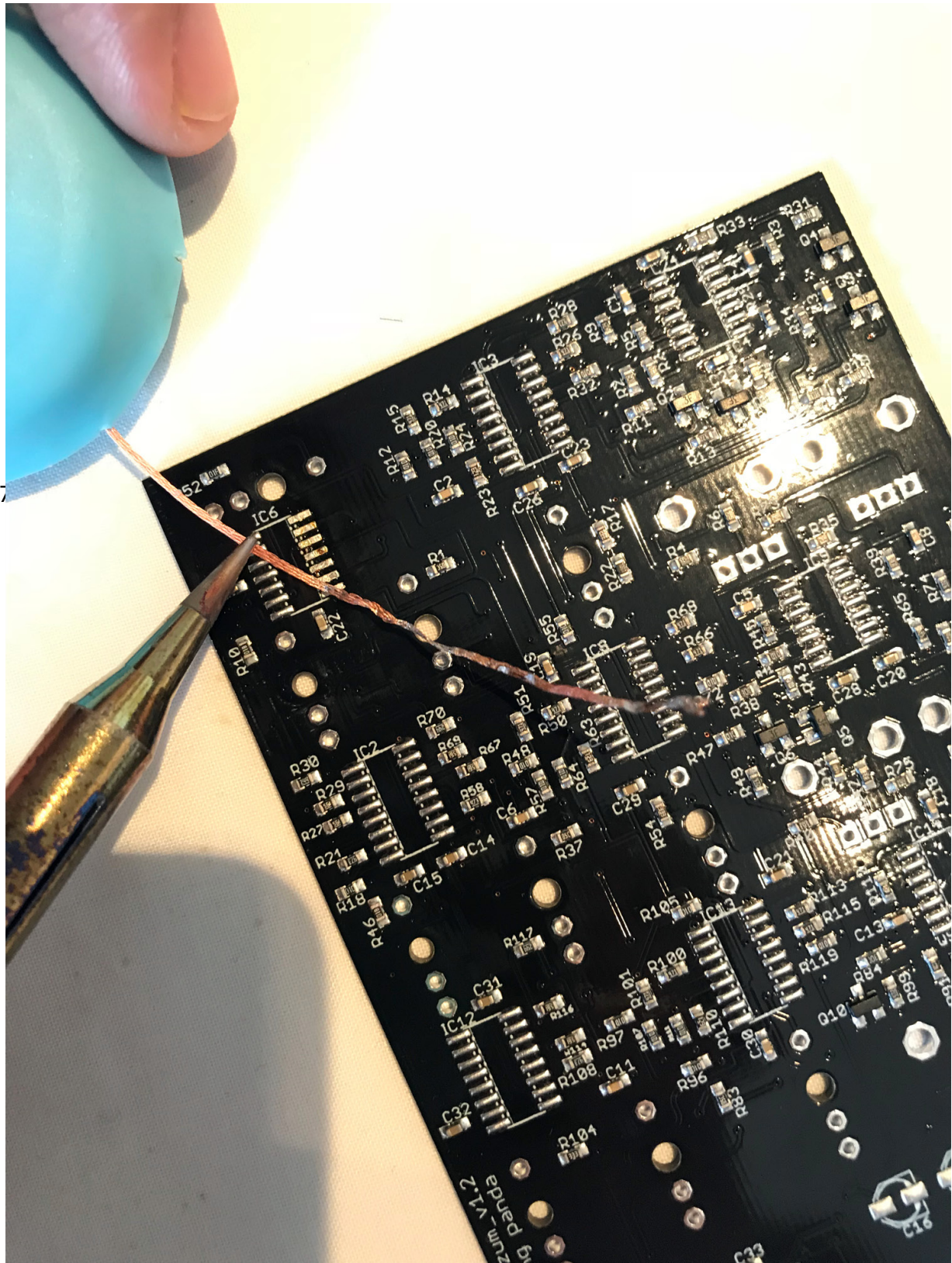
All components except IC's and electrolytic caps are pre-soldered, all pads have already solder paste so you can use hot air or soldering iron.

Please visit patchingpanda.com to show examples how to solder those IC's.

Qty	Value	Parts
2	10uF	C16,C17
5	LM13700M	IC2, IC3, IC8, IC12, IC13
4	TL074	IC4, IC6, IC9, IC14
1	TL072	IC10
1	PURPLE LED	LED1
11	PJ301_THONKICONN6	
9	100kb pots	CUTOFF1, CUTOFF2, CUTOFF3 RES1, RES2, RES3, R77, R78, R79
1	M03X1PTH	EXPANDER
1	M05X2PTH	POWER



1. If you don't have a hot air gun and you don't feel comfortable soldering on solder paste, you can remove the solder paste with solder wick.



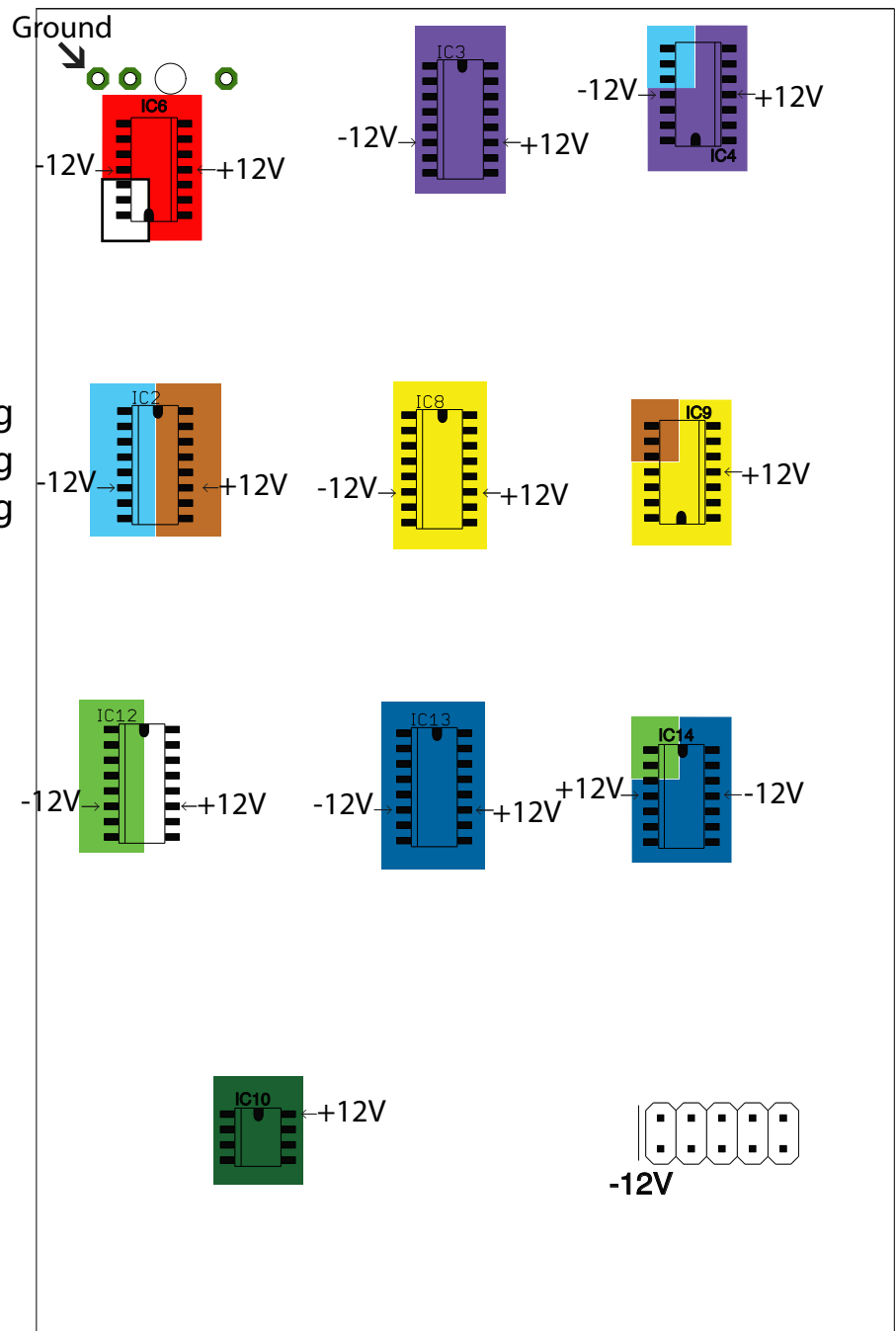
Trouble shooting.

Most of smd components are pre-soldered except electrolytic caps and IC's. if you are experiencing bad behavior from the module, they're high probabilities that IC's are not properly soldered to the board. Follow the next instructions to solve any issues.

1. Check polarity of IC's.
2. Check if there is a short by measuring continuity from the positive/ground, negative/ground and negative/positive.
3. Check if IC's are fed with - and + voltages.
(refer to the color sheet)

4. Reflow on marked areas if :

- There is not sound at all
- Channel 1 cutoff is not working
- Channel 2 cutoff is not working
- Channel 3 cutoff is not working
- Channel 1 feedback is not working
- Channel 2 feedback is not working
- Channel 3 feedback is not working
- Mixer section doesn't work
- Led is not working



5. If you are still experiencing issues send us an email at info@patchingpanda.com we will be happy to help you.