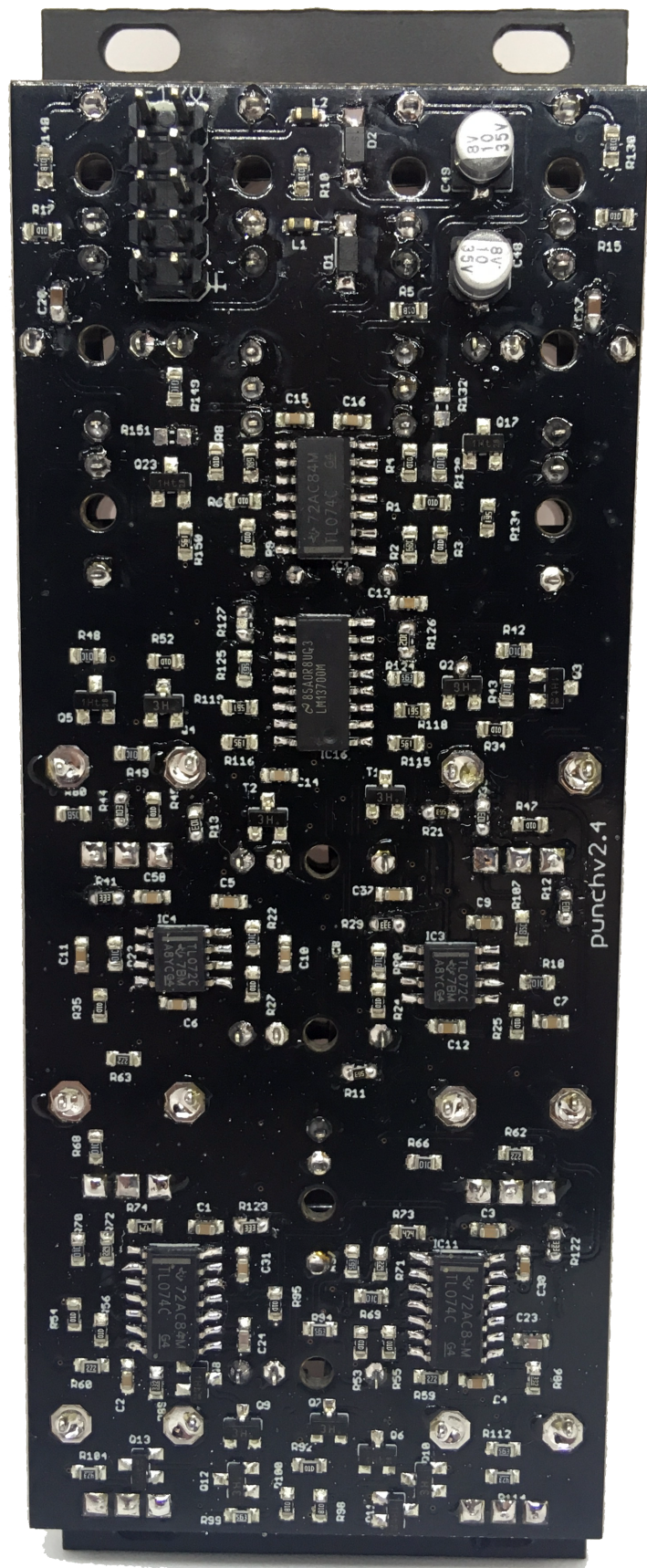
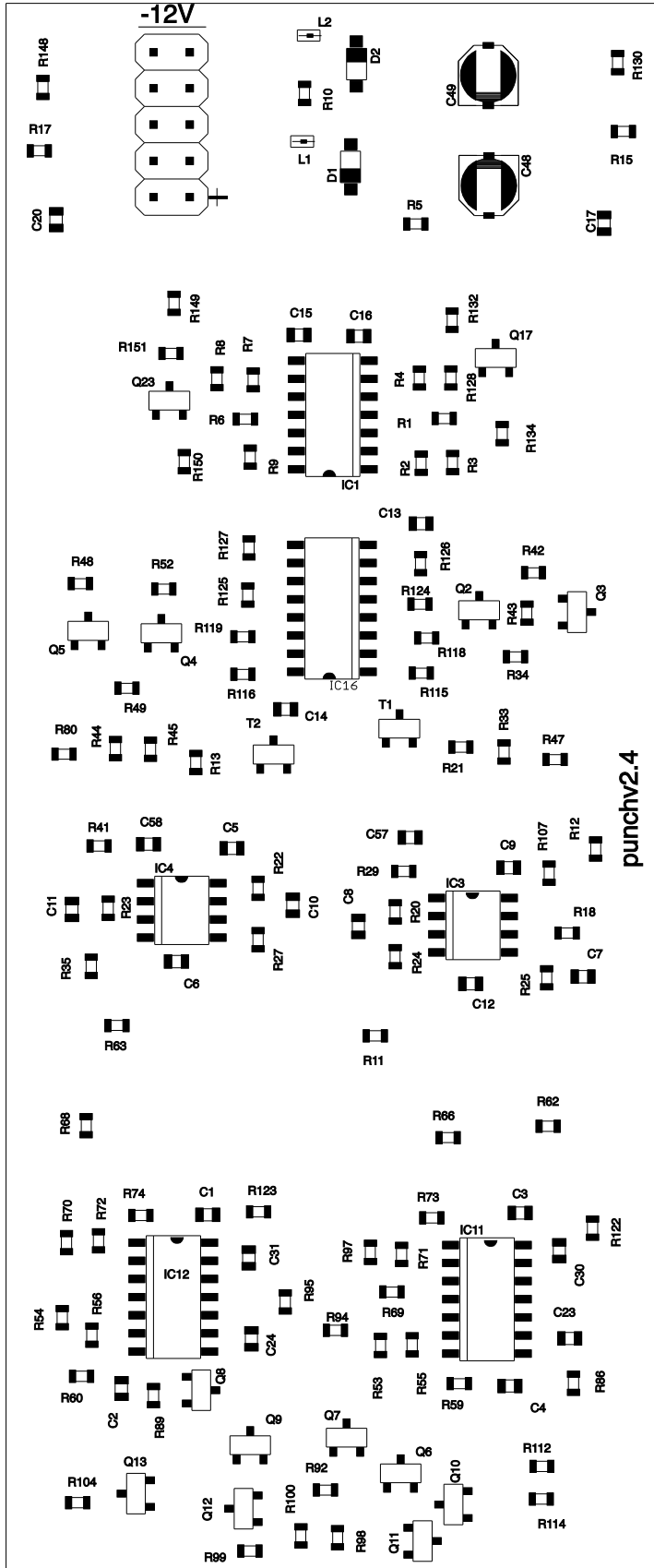


NOTE: This is a full SMD DIY Kit. If you are not familiar with this type of assembly, please look for information about it before.

MEDIUM GRADE 



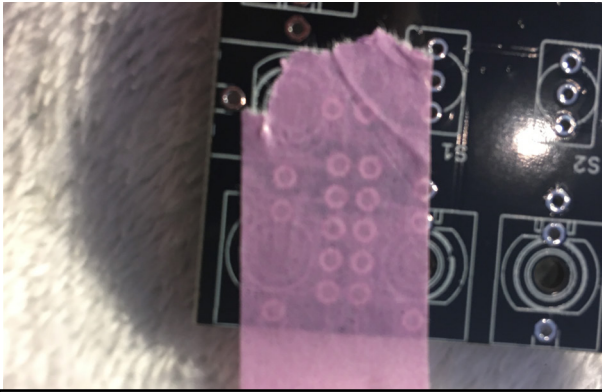
All components except IC s and electrolytic caps are pre-soldered.



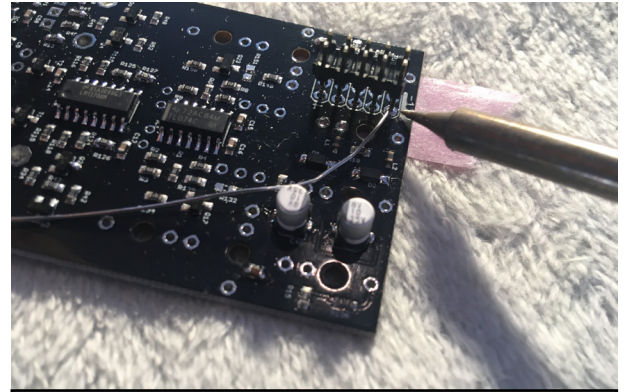
Qty	Value	Parts
2	10uF	C48, C49
2	1N5819	D1, D2
1	LM13700M	IC16
3	TL074	IC1, IC11, IC12
2	TL072	IC3, IC4
2	PURPLE LED	
12	PJ301_THONKICONN6	
6	100kb pots	
6	knobs	
6	special pot round nuts	
2	submini-2T	S1, S2
1	M05X2PTH	POWER
1	Power Cable	



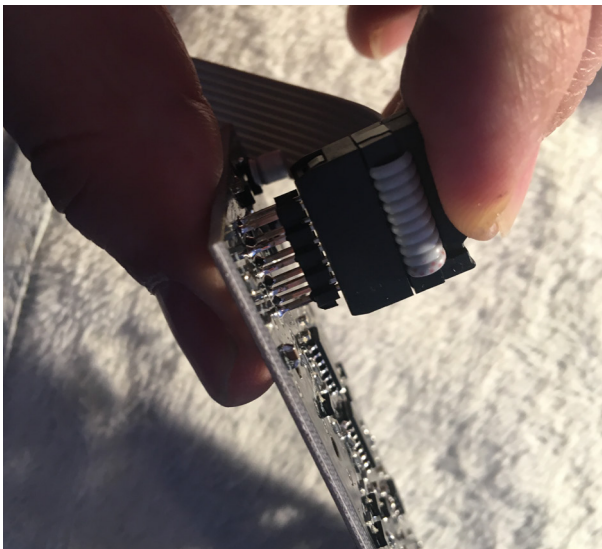
## SOLDERING THE POWER CONNECTOR



1. Put some tape on front side of the pcb.



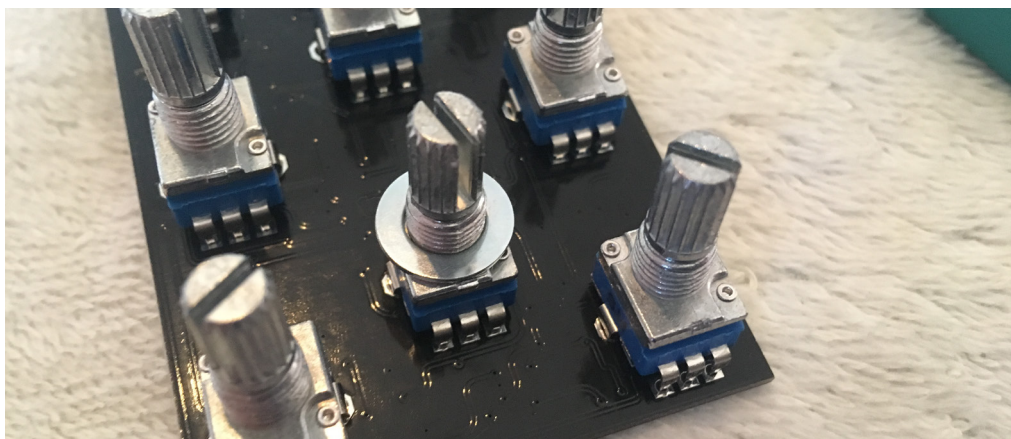
2. Insert the male header pins with the longest part upside down and solder.



3. Connect the ribbon cable and push down.



3. Remove the anti-rotation tag.



5. Place 2 washers per pot and continue with the assambling .