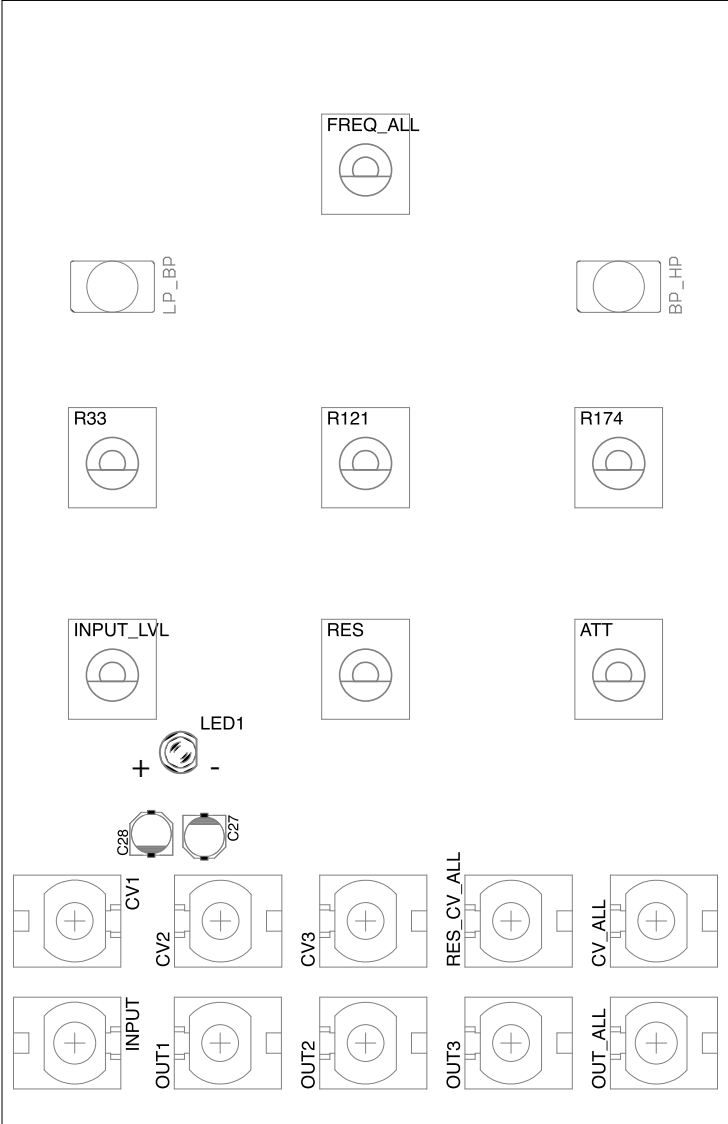


This Kits comes with all SMD pre-soldered

EASY GRADE ●

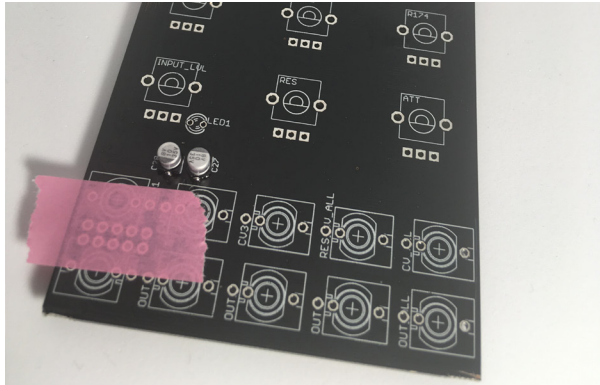


IMPORTANT: TO BUILD THIS MODULE REFER TO OUR ONLINE MANUAL
www.patchingpanda.com

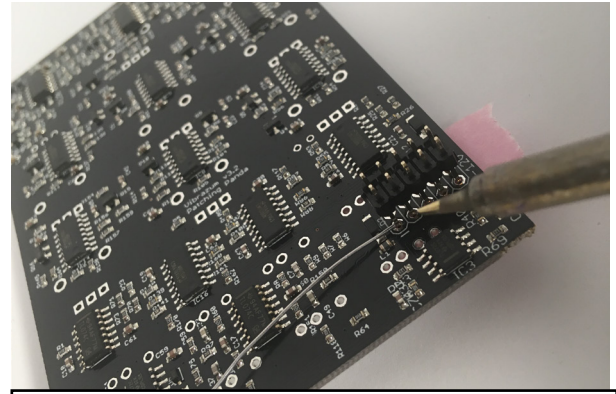


Qty	Value	Parts
1	PINK LED	
10	THONKICONN/nuts	
7	100kb pots	
2	Toggle switches	
7	Special pots round nuts	
6	Small knobs	
1	Big knobs	
1	Allen key	
14	Spacer washers	
1	M05X2PTH	POWER
1	Eurorack power cable	

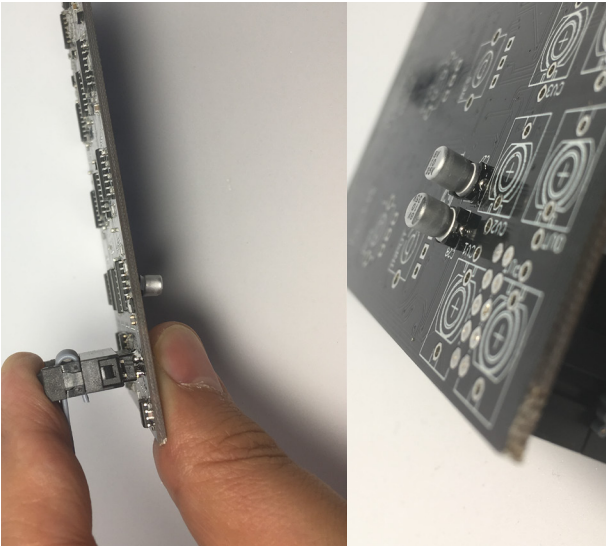
SOLDERING THE POWER CONNECTOR



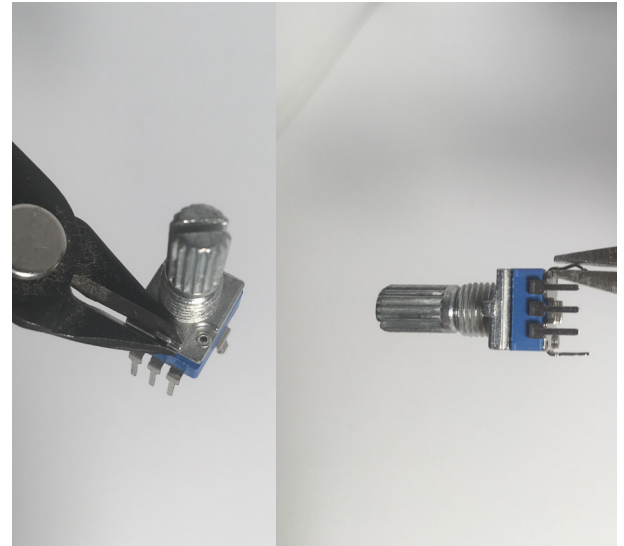
1. Put some tape on the front side of the pcb.



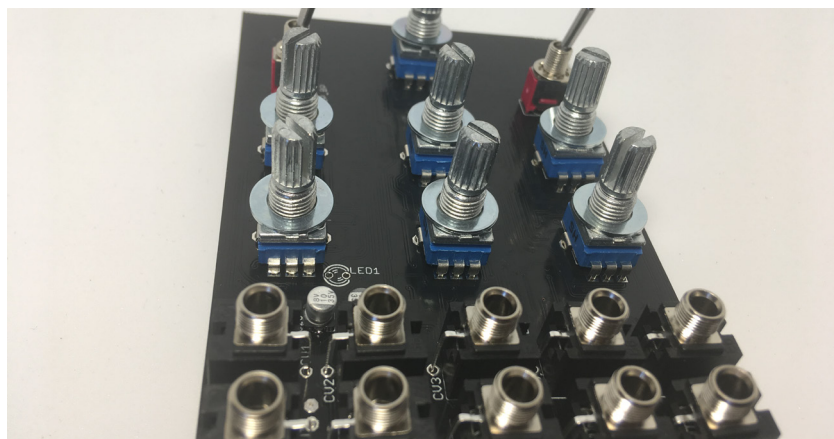
2. Insert the male header pins with the longest part upside down and solder.



3. Connect the ribbon cable and push down.



4. Remove the anti-rotation tag, straighten up the bracket.



5. Place 2 washers per pot and continue with the assembling .