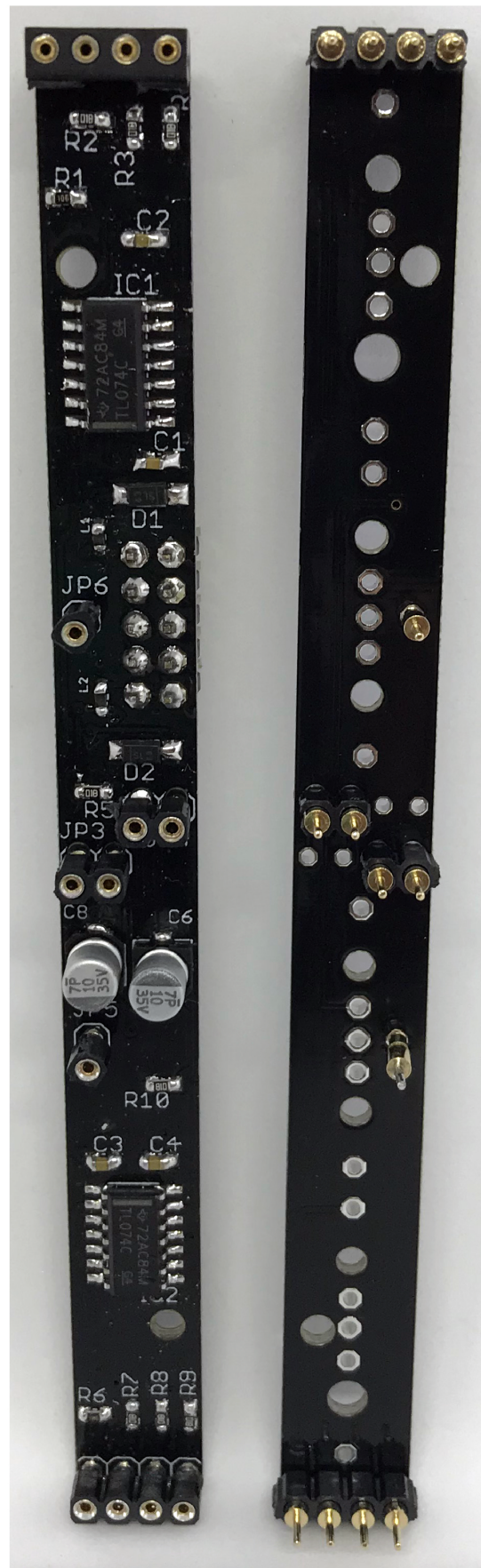


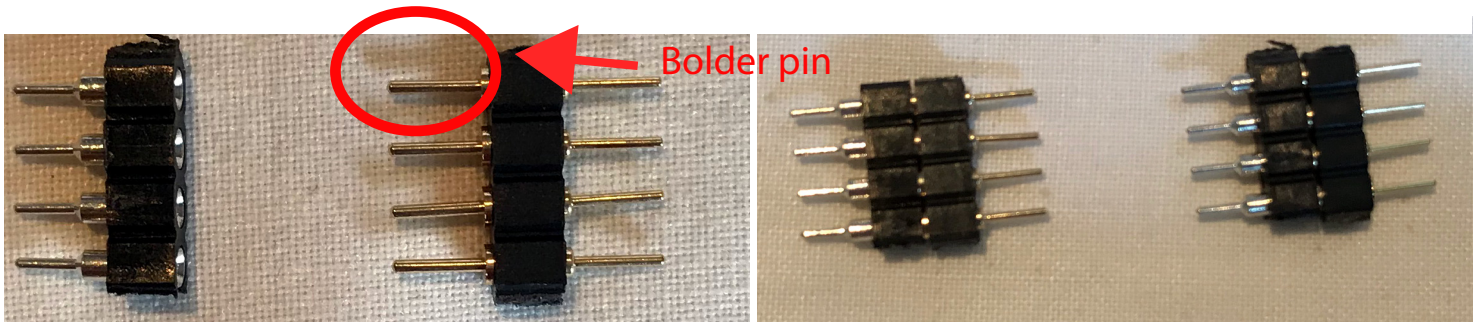
This Kits comes with all SMD pre-soldered

EASY GRADE ●

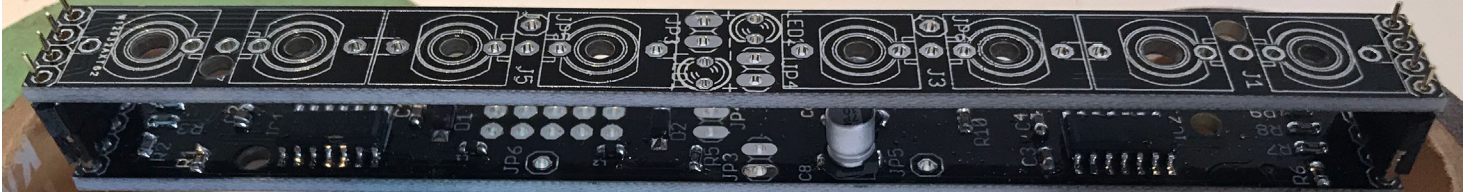


[illegible]





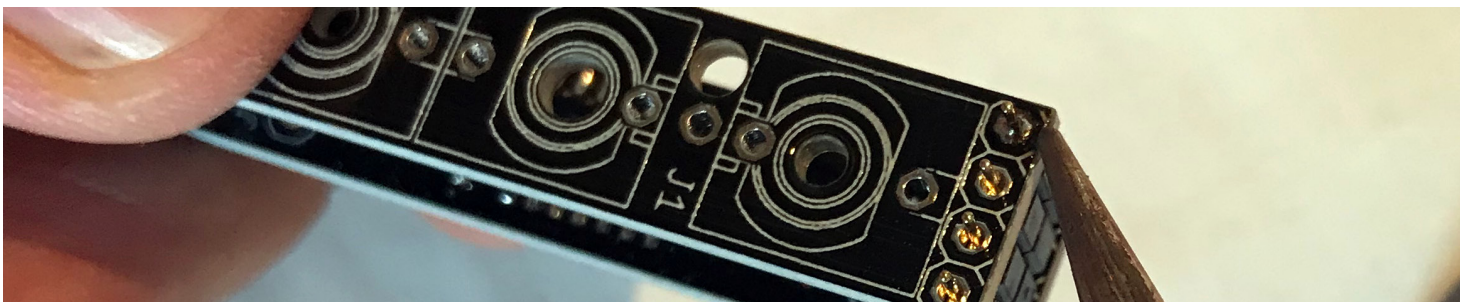
1. Cut females/males pins and insert the male pin with the bolder part into the female socket.



2. First place the x4 pines on each side but don't solder them.

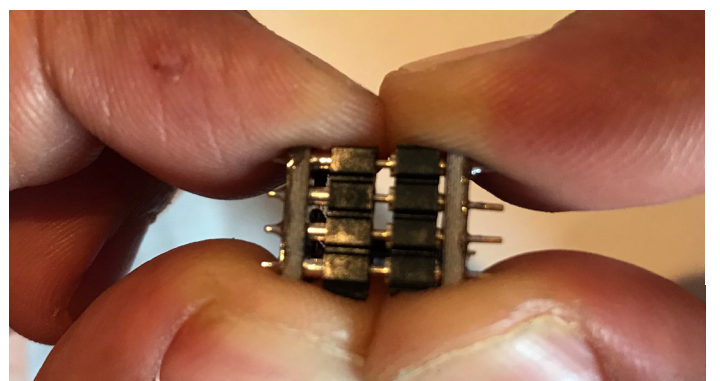


3. Solder one pin, if it's not lined up to the bottom pcb with the top, do not worry. This will be fixed in the next step.

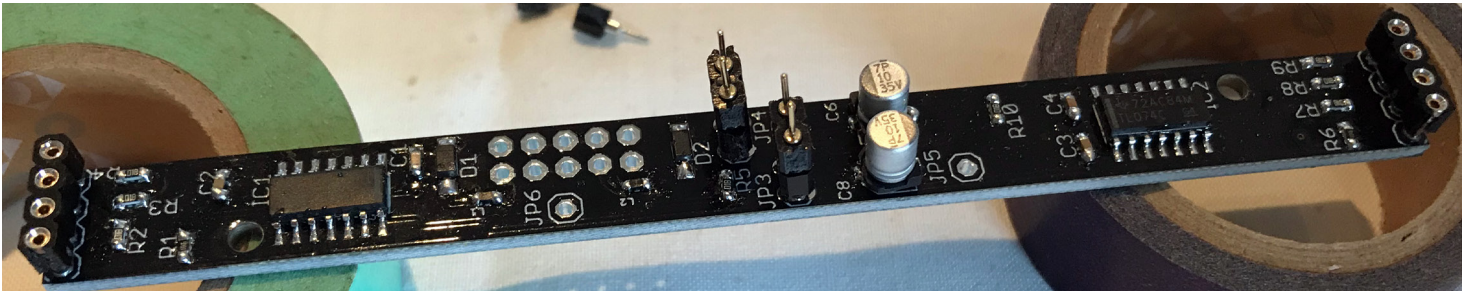


4. Use your other hand to make it straight while your giving heat.

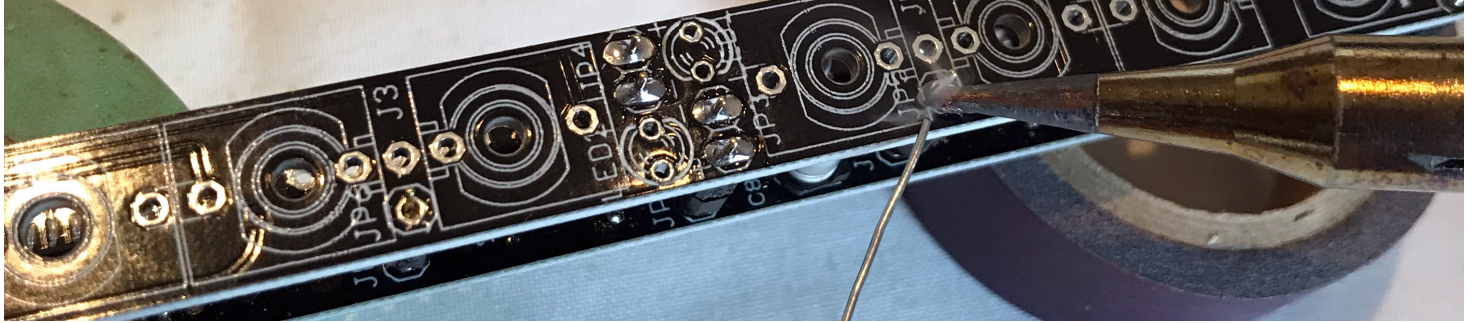
5. When you unmount the pins do it carefully, they could bend and break. First take it out until the middle way and then do the other side .



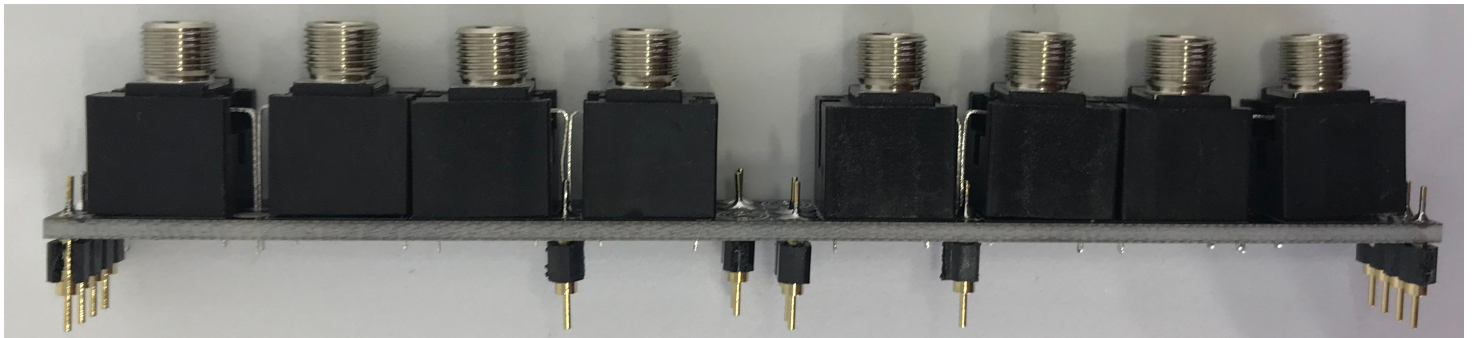




6. Place the x2 pines with the top pcb to solder both sides.



7. Do the same with the x1 pines.



8. Place the jacks, be aware some pins are sharing ground, mount the leds, front panel and solder everything.