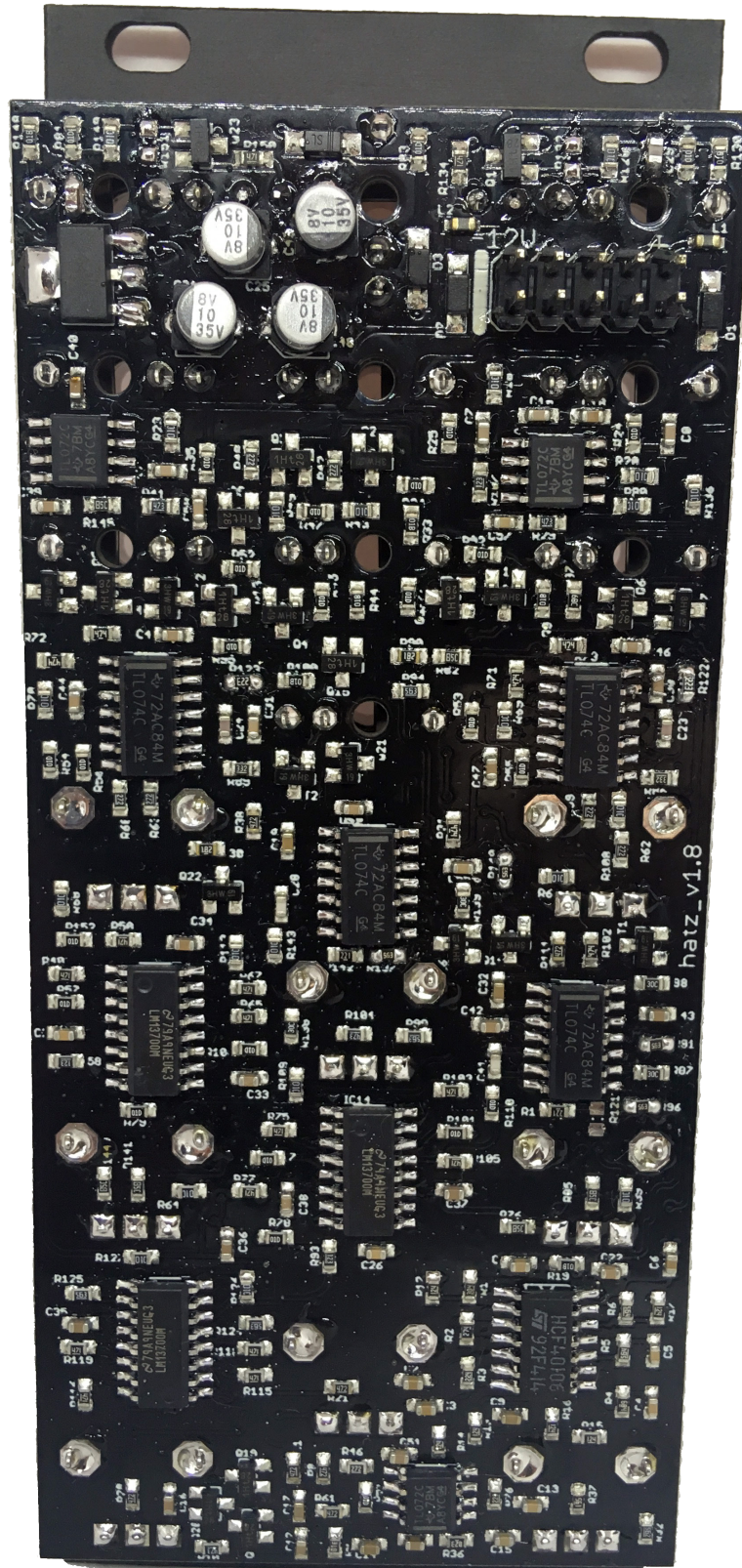


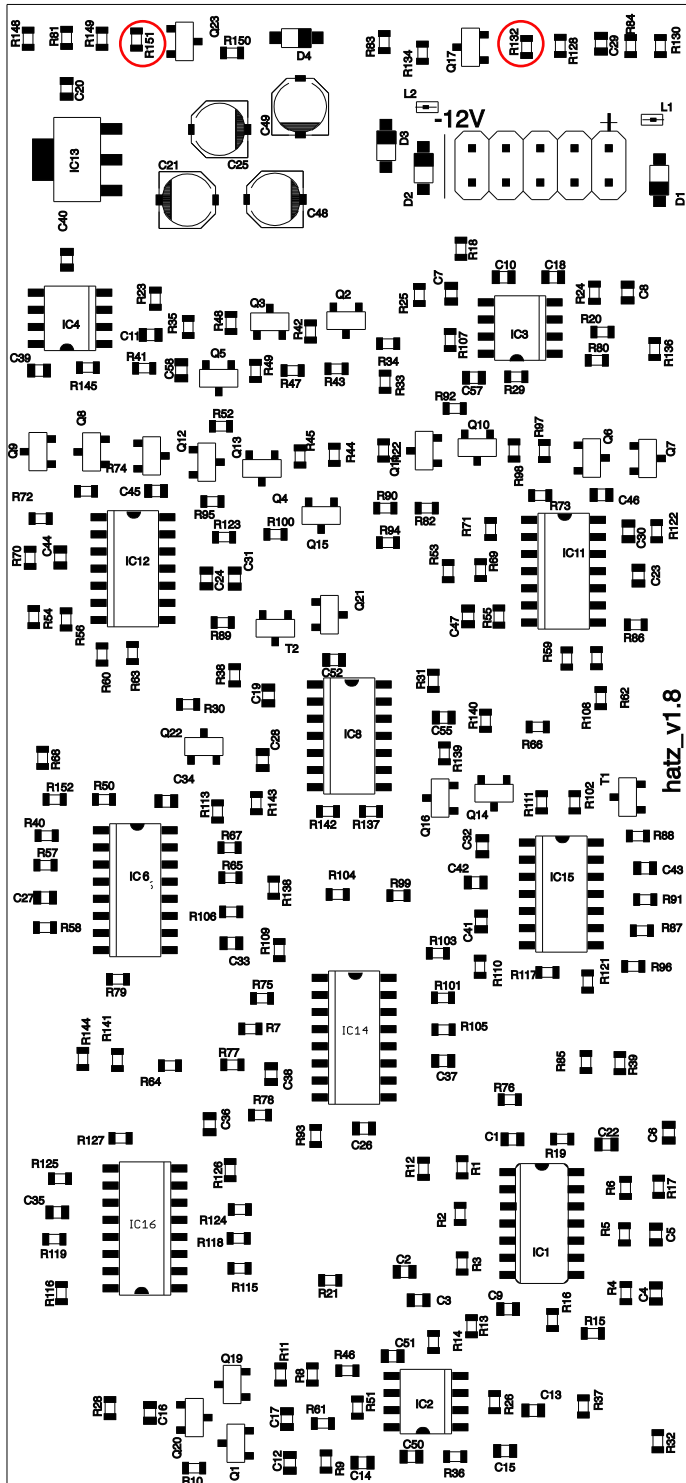
NOTE: This is a full SMD DIY Kit. If you are not familiar with this type of assembly, please look for information about it before.

MEDIUM GRADE 



**IMPORTANT: TO BUILD THIS MODULE REFER TO OUR ONLINE MANUAL**  
<http://patchingpanda.com/wp-content/uploads/2019/06/hatz-DIY-manual.pdf>

All components except IC s and electrolytic caps are pre-soldered.

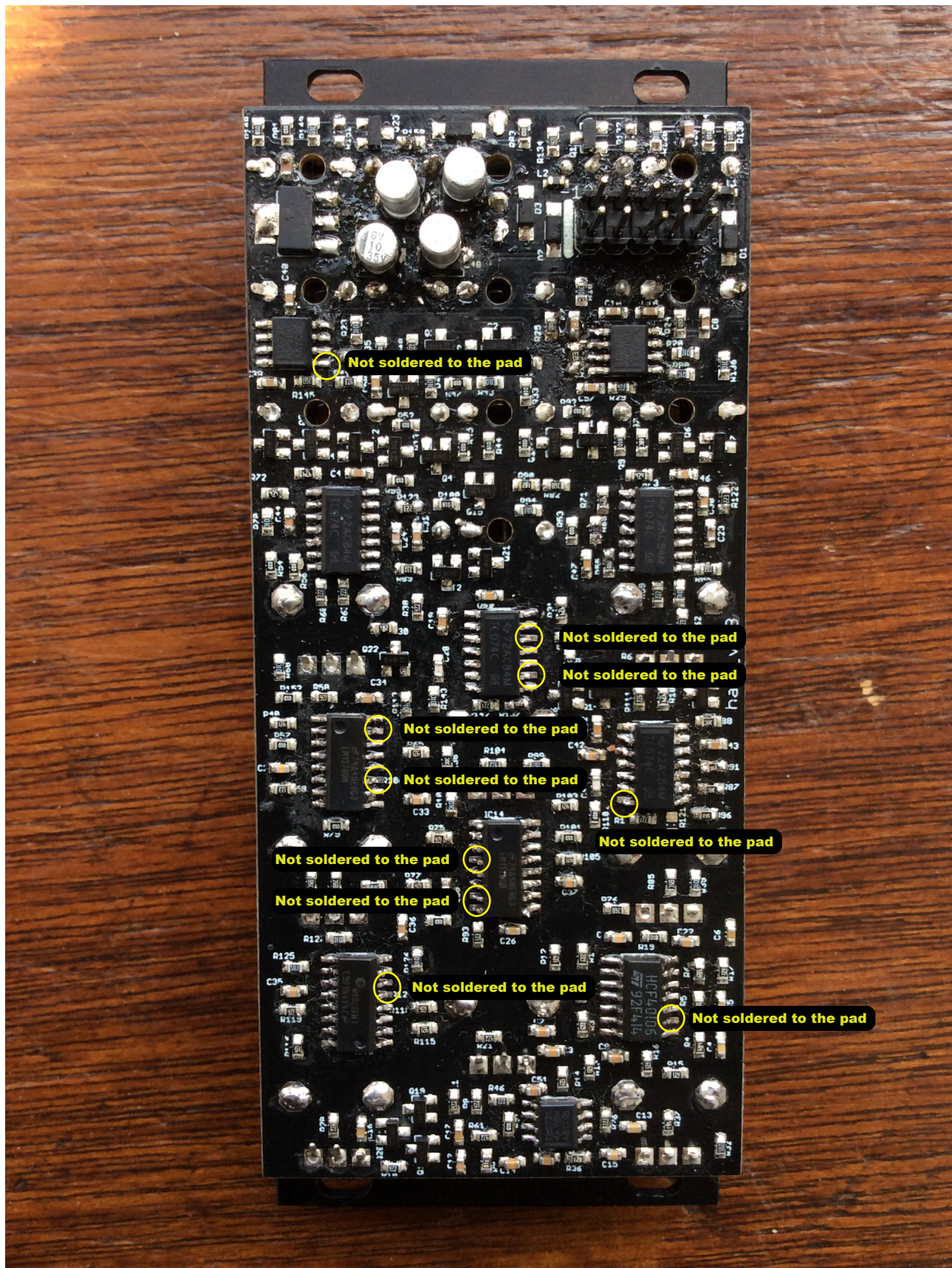


1. Remove the resistors circled in red
2. Solder de components from the list:

Qty	Value	Parts
4	10uF	C21, C25, C48, C49
3	LM13700M	IC6, IC14, IC16
4	TL074	IC8, IC11, IC12, IC15
3	TL072	IC2, IC3, IC4
1	LM1117-5.0	IC13
1	40106D	IC1
2	PURPLE LED	
11	PJ301_THONKICONN6	
8	100kb pots	
8	special pots round nuts	
8	knobs	
1	M05X2PTH	POWER
1	eurorack power cable	



After you solder the SMD components take 5 minutes to check all IC's for this kind of errors. These faults are very common with smd begginers. Use flux and reflow the spots you have found. There are many kind of loupes in the market to help you find these mistakes.

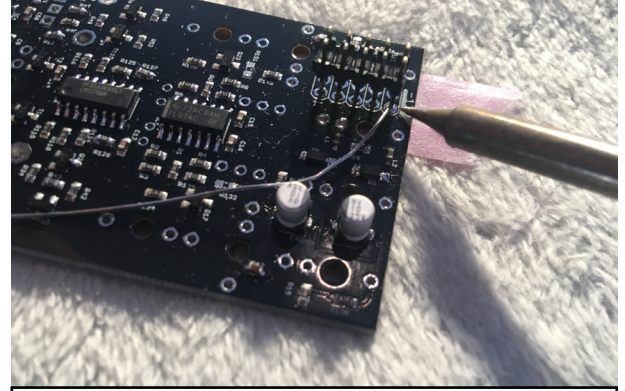




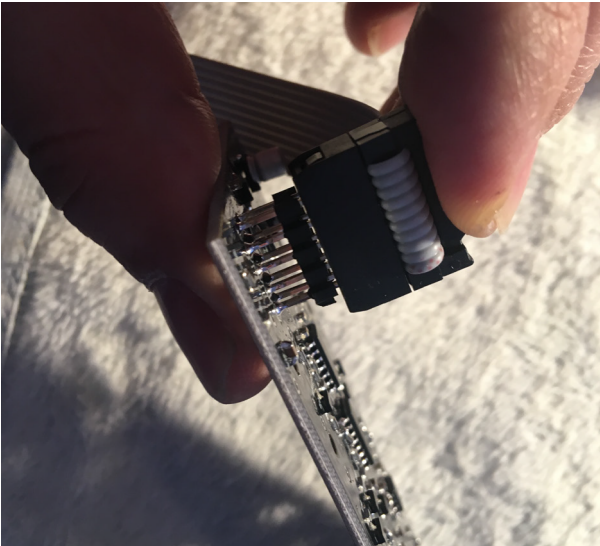
## SOLDERING THE POWER CONNECTOR



1. Put some tape on front side of the pcb.



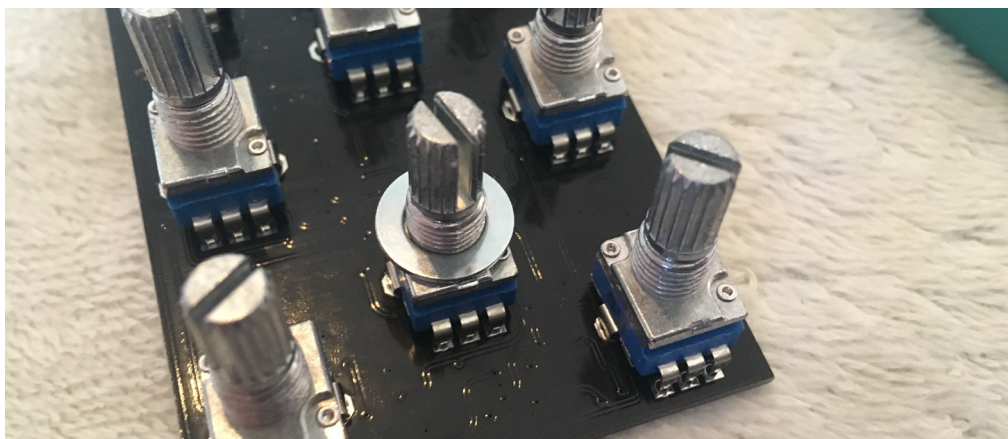
2. Insert the male header pins with the longest part upside down and solder. Make sure the solder is been melted, specially in the ground pads.



2.Connect the ribbon cable and press down on the connector until the plastic spacer moves towards the board.



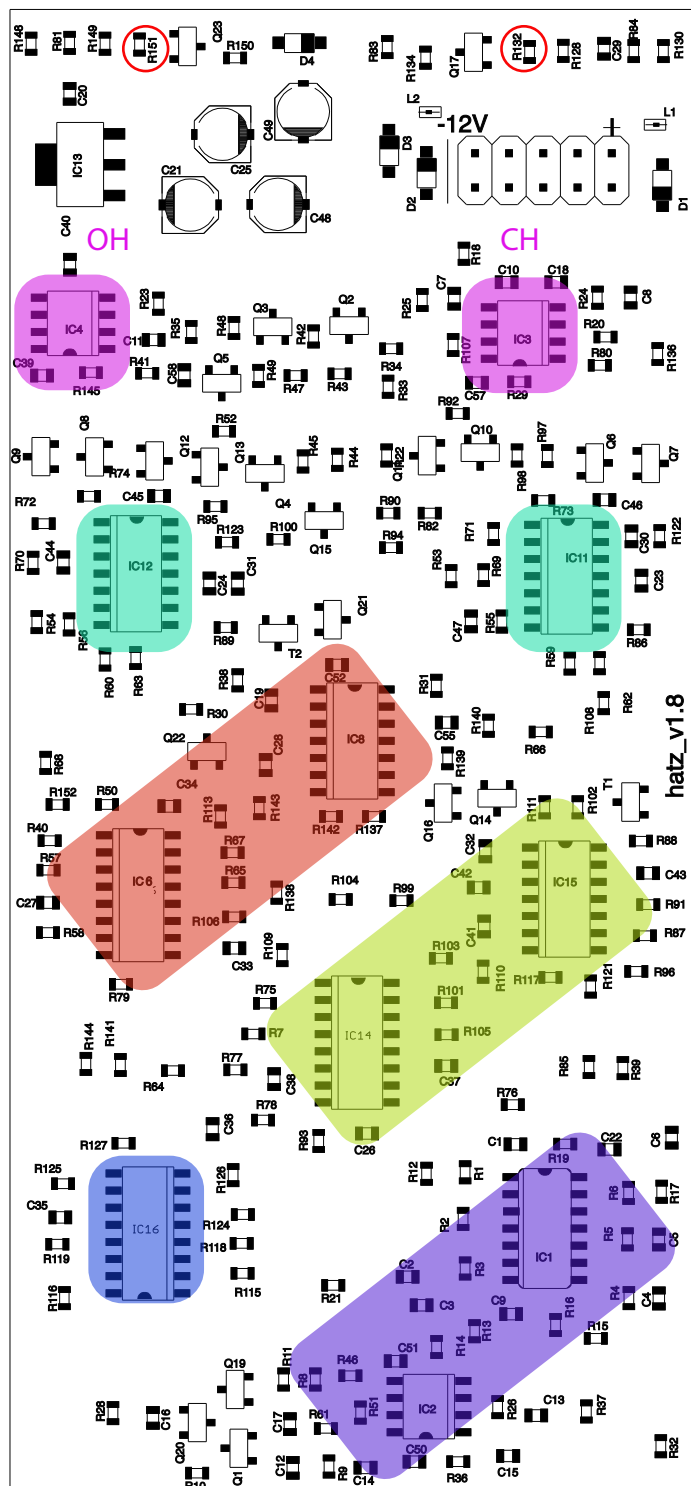
3. Remove the anti-rotation tag.



5. Place potentiometers and jacks on the board but do not solder them. Put 2 washers per pot, place the front panel and screw it. This ensures that the jacks and pots are placed in the right position and will sit at the correct height. With the front panel attached, flip the board over and solder them.



All components except IC s and electrolytic caps are pre-soldered.



1.Remove the resistors circled in red

2.Solder de components from the list:

Qty	Value	Parts
4	10uF	C21, C25, C48, C49
3	LM13700M	IC6, IC14, IC16
4	TL074	IC8, IC11, IC12, IC15
3	TL072	IC2, IC3, IC4
1	LM1117-5.0	IC13
1	40106D	IC1
2	PURPLE LED	
11	PJ301_THONKICONN6	
8	100kb pots	
8	special pots round nuts	
8	knobs	
1	M05X2PTH	POWER
1	eurorack power cable	

