

COMPLEX GRADE ●

This is a quite complex build. Please read all out to be aware to make this assembly as easy as possible. Follow the steps carefully.

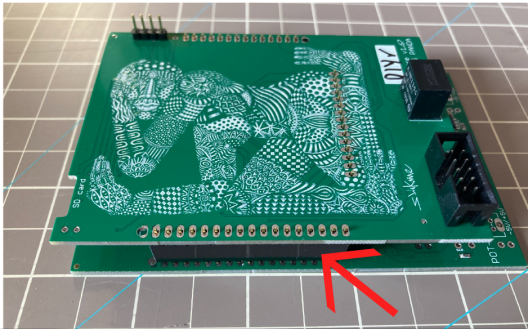
If you make an error soldering the hardware it will be very hard to fix it if you are not an experienced DIYer.

Some components are tricky to align and solder.

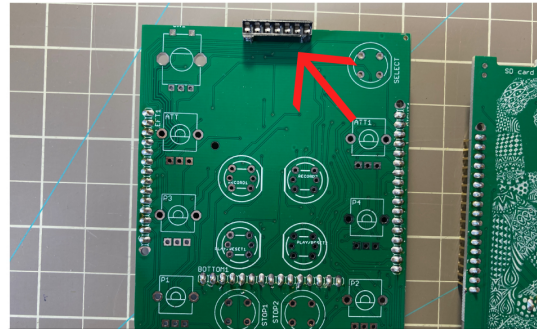
Please double check.



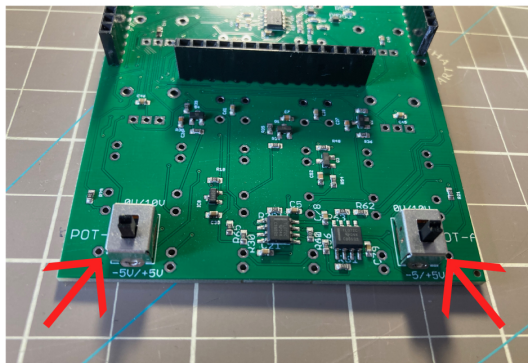
FOLLOW THIS STEPS FOR BUILDING THIS KIT



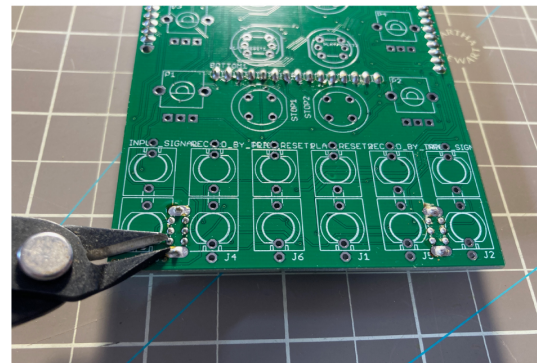
1. Solder the spacers.



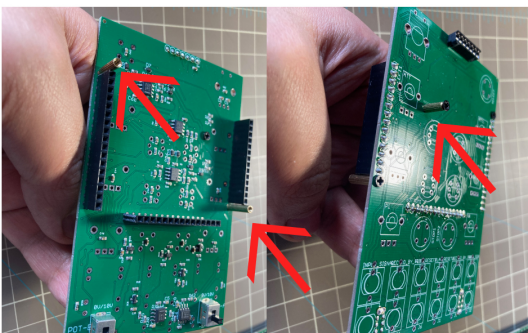
2. Solder the oled socket like the picture is showing.



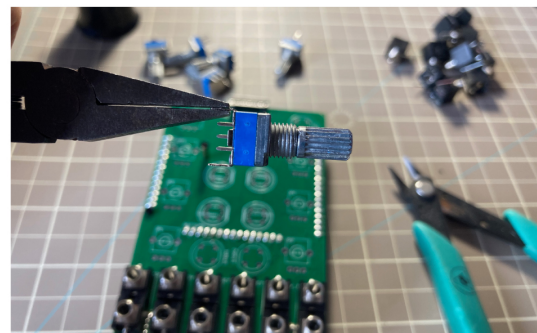
3. Solder the slider switches.



4. Carefully cut the pins so the jacks can settle properly.

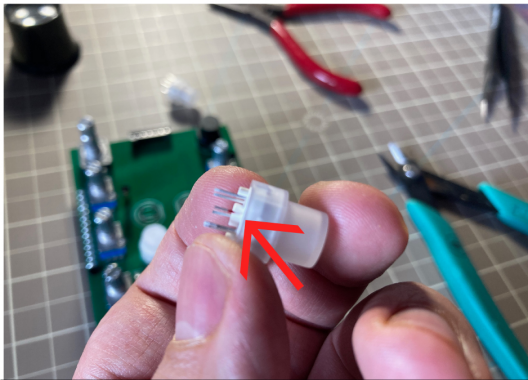


5. Screw the couple of bigger metal spacers at the back of the control board and the small one in the front side like the picture is showing.

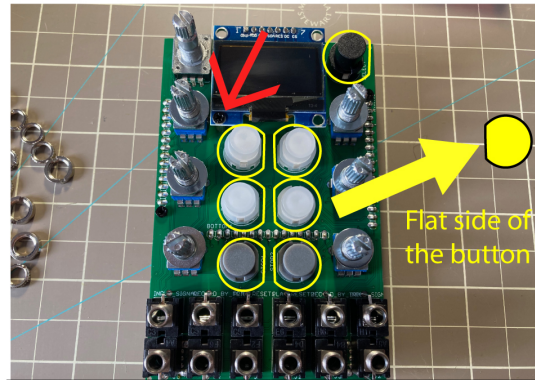


6. Straighten up the bracket.

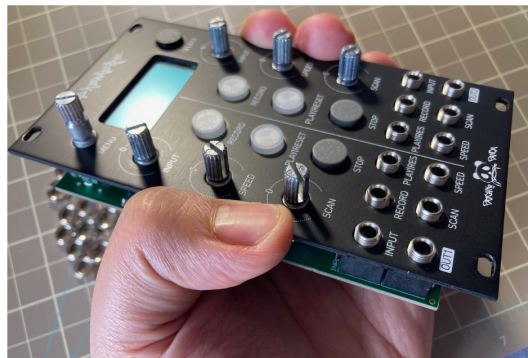
NEXT STEPS ARE CRITICAL. FULL CONCENTRATION IS REQUIRED TO AVOID FATAL MISTAKES. BENEFIT FROM 5 MIN BREAK. Please take the time to read the next steps as described. Check buttons polarity, mounting hardware is properly placed and aligned. Do not solder anything until all hardware is correctly attached to the panel, double check everything before soldering. MAKING AN ERROR AT THIS POINT WOULD BE VERY COMPLICATED TO DESOLDER. YOU ARE INFORMED TO AVOID UNPLEASANT SITUATION.



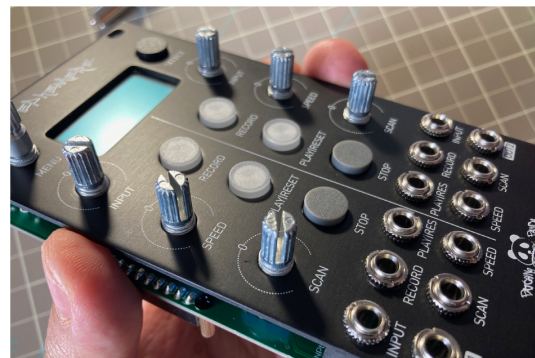
7. Check the LED colour marked on the push button, check polarity make sure the flat side of the button matches the flat side of the silkscreen.



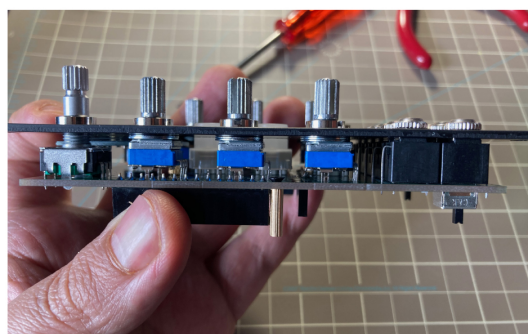
8. Place the hardware, screw the oled to the metal spacer and place 2 washers per pot (double check again POLARITY but DON'T SOLDER YET)



9. Carefully place the panel and press it otherwise the buttons or pots can easily fall out. Check all jacks are correctly aligned after this step screw the jacks to the panel.



10. Pull up the pots and screw them to the panel, don't pull up the encoder. Be careful if the panel is not correctly placed pots or buttons can fall out.



11. Check the panel, pots and jacks are correctly balanced before soldering. Don't pull up the encoder like the pots.



12. Put tape on the buttons to continue with the soldering session. Do not apply too much time and heat soldering the middle legs of the buttons, BEWARE LED'S CAN BE DAMAGED.

FOLLOW THIS STEPS FOR BUILDING THIS KIT



13. Attach and screw the back of the PCBA, place the knobs. Proceed to calibration.

THANK YOU FOR ADOPTING A PANDA ON YOUR RACK.

PLEASE REFER TO:

<http://patchingpanda.com/wp-content/uploads/2021/05/Ephemere-Manual.pdf>

BON VOYAGE !