

## COMPLEX GRADE

This is a quite complex build. Please read all out to be aware to make this assembly as easy as possible. Follow the steps carefully.

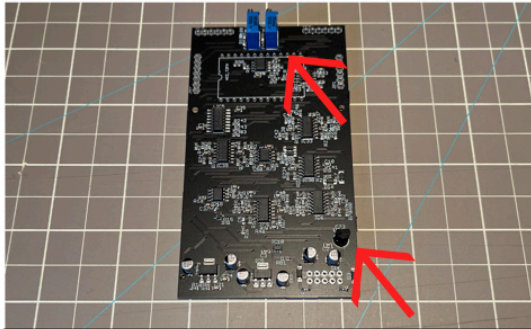
If you make an error soldering the hardware it will be very hard to fix it if you are not an experienced DIYer.

Some components are tricky to align and solder.

Please double check.



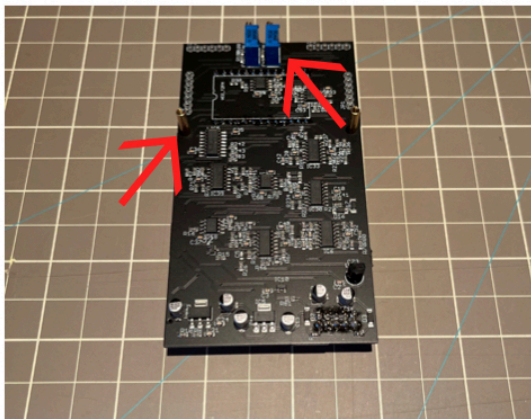
FOLLOW THIS STEPS FOR BUILDING THIS KIT



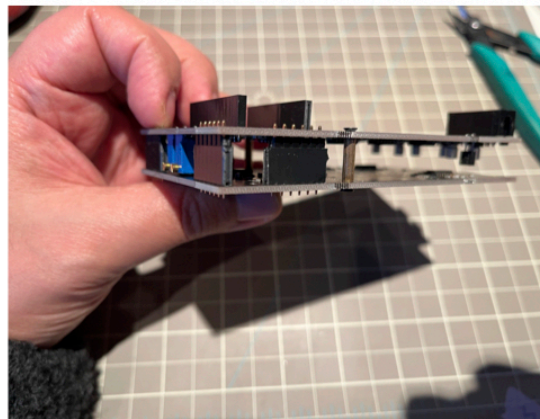
1. Solder both trimmers and the -5V regulator.



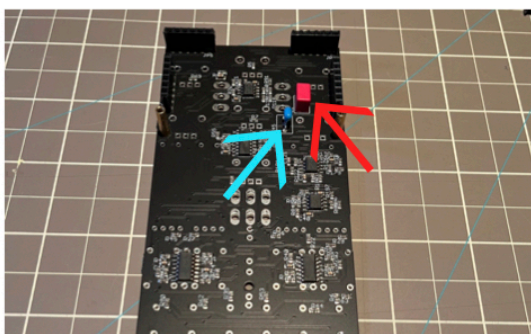
2. Solder the power connector and the female sockets for the mini-PCB as showing in the pic, you can use the mini-PCB to align it better.



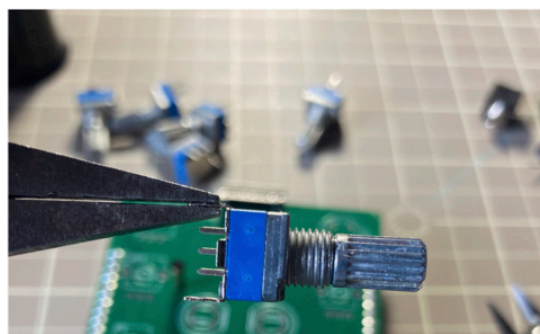
3. Screw the metal spacers and solder the trimmers as shown in the pic.



4. Place the female and male sockets. Screw the control PCB to the main PCB. Solder the sockets.



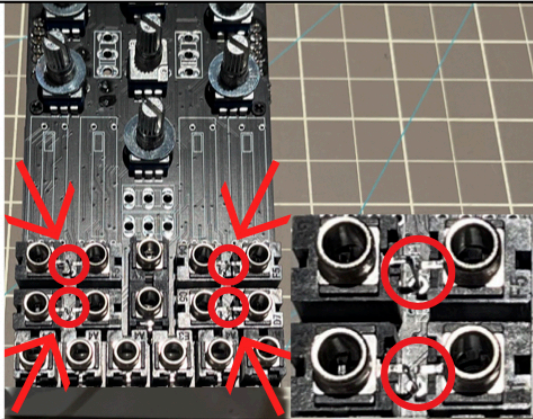
5. Solder C1= 3.9nF (red one)  
C45=100nF (blue one).



6. Straighten up the bracket.



NEXT STEPS ARE CRITICAL. FULL CONCENTRATION IS REQUIRED TO AVOID FATAL MISTAKES. BENEFIT FROM 5 MIN BREAK. Please take the time to read the next steps as described. Check buttons polarity, mounting hardware is properly placed and aligned. Do not solder anything until all hardware is correctly attached to the panel, double check everything before soldering. MAKING AN ERROR AT THIS POINT WOULD BE VERY COMPLICATED TO DESOLDER. YOU ARE INFORMED TO AVOID UNPLEASANT SITUATION.



7. Pay attention 8 jacks are sharing the ground leg, you will need to insert both legs where the circles are showing.



8. Place the hardware except for the switches to easily align the panel. Insert the panel to check the hardware is perfectly aligned. Remove the panel to place the switches, this way will be easier.



9. Place the sliding switches. The 3 position switch (the red one) must be inserted where the arrow is showing. With all hardware aligned, screw the panel. Now continue to solder.



10. Screw the back PCB. Place the mini-PCB as shown respecting the orientation of the silkscreen.



11. The trimmer on the right will calibrate C1 and the trimmer on the left C9. Continue with calibration.